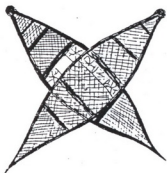


# METATE

1921

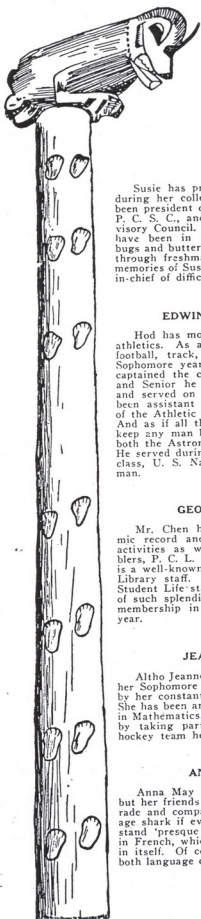
PUBLISHED ANNUALLY  
BY THE  
JUNIOR CLASS



POMONA COLLEGE

JUNE 1920

VOL 27



#### SUSIE CASE

Susie has proved herself a worthy executive during her college years. As a senior she has been president of Alpha Kappa, vice-president of P. C. S. C., and secretary of the Student Advisory Council. Her deepest scholastic interests have been in the laboratory, with frogs and bugs and butterflies, and many who have labored through freshman biology will ever hold kindly memories of Susie, their lab assistant, and solver-in-chief of difficulties.

#### EDWIN BEATTIE CHAMBERS

Hod has more than distinguished himself in athletics. As a Freshman he was on the class football, track, and swimming teams. In his Sophomore year he played Varsity football and captained the class football team. As a Junior and Senior he played fullback on the Varsity and served on the class track team. Hod has been assistant athletic manager and a member of the Athletic Council during the present year. And as if all the foregoing were not enough to keep any man busy, Hod has been a member of both the Astronomical and Economics Seminars. He served during the war as gunner's mate, 2nd class, U. S. Navy. Chambers is a Sigma Tau man.

#### GEOFFREY CHU CHEN

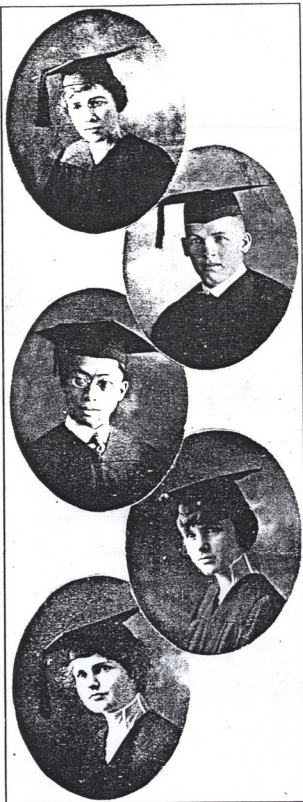
Mr. Chen has made a very notable academic record and has participated in numerous activities as well. He is a member of Scribblers, P. C. L. S., and the History Seminar. He is a well-known and very capable worker on the Library staff. He has served faithfully on the Student Life-staff. His academic work has been of such splendid quality that he was elected to membership in Phi Beta Kappa in his Senior year.

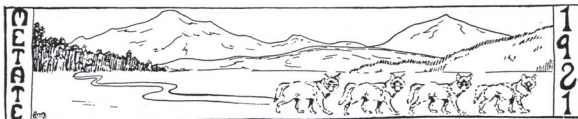
#### JEANNETTE CHANEY

Altho Jeannette did not come to Pomona until her Sophomore year, she has proved her loyalty by her constant support of all college activities. She has been an eager student, shining especially in Mathematics. She has been loyal to her class, by taking part in athletics; she was on the hockey team her Senior year.

#### ANNA MAY CHUML

Anna May is not loud in her own applause but her friends know and value her a good comrade and companion. She is a Romance language shark if ever there was one and can understand 'presque tout' that you may say to her in French, which is an enviable accomplishment in itself. Of course Anna May is a member of both language circles.





## P. C. L. S.

The Pomona College Literary Society was organized in 1888 and is the oldest society in college. Its members are chosen for their intellectual achievement and for their public-spirited interest in college activity. The society meets at fortnightly intervals and every other meeting is a social one.

### OFFICERS

#### FIRST SEMESTER

Webster Vannier.....	President.....	Margaret Blake
Lillian Coleman.....	Vice-President.....	Keith Powlison
Margaret Blake.....	Secretary.....	Winifred Gerberding
Ray Moremen.....	Treasurer.....	Laura Batkin
George Dunham.....	Critic.....	Madeline Enman

#### SECOND SEMESTER

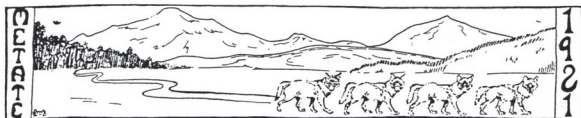
### MEMBERS

George Dunham, '20  
Clifford Backstrand, '20  
Laura Batkin, '20  
Margaret Blake, '20  
James Peirsol, '20  
Webster Vannier, '20  
Catherine Rich, '20  
Madeline Enman, '20  
Estelle Vandruuff, '20

Concha Romero, '20  
Gertrude Jennings, '20  
Mabel Cloyd, '20  
Helen Iredell, '20  
Delight Wright, '20  
George Pooley, '20  
Rex Ragan, '20  
Edris Powlison, '20  
Mary Lyman, '20

Allen Grover, '20  
Geoffrey Chen, '20  
Lillian Coleman, '21  
Ray Moremen, '21  
Travis Shelton, '21  
John Marshall, '21  
Winifred Gerberding, '22  
Keith Powlison, '22





## SCRIBBLERS

In 1913 the five charter members of Scribblers organized a society for the production and criticism of literary work. Since then the society has become increasingly prominent from year to year. Its membership vacancies are eagerly sought after by enthusiastic devotees of English Composition. The Scribblers are frequent contributors to the Scribblers' Magazine which has been re-established after a two-year interval of nonproduction. The Scribblers meet at fortnightly intervals, in gatherings of literary and social interest.

### OFFICERS

First Semester		Second Semester
James Peirsol.....	President.....	George Dunham
Catherine Rich.....	Secretary.....	Elwyn Crosswhite
Webster Vannier.....	Critic.....	James Peirsol
Catherine Rich.....	Reader.....	Catherine Rich

### MEMBERS

Faculty Members  
 Mr. William S. Ament  
 Miss Marjorie Hitchcock  
 Student Members  
 Henry Cooke, '20  
 Elwyn Crosswhite, '20  
 Geoffrey Chen, '20  
 George Dunham, '20

Joseph Mitchell, '20  
 James Peirsol, '20  
 Webster Vannier, '20  
 Catherine Rich, '20  
 Wilson Jones, '21  
 Winifred Gerberding, '22  
 Lynn Weaver, '22  
 Doris Packard, '23





## THE AMPHION SOCIETY

The latest organization formed in college is the Amphion Society. The purpose of this society is to promote a spirit of unity and good-fellowship among the faculty and students of the Music Department of the College; and to serve the interests of the Music Department in every way possible. The first meeting was held just before the Spring Recess, when a remarkable series of stunts and a very enthusiastic meeting showed that the society was well worth while.

The officers chosen for the semester are:

President, Howard Pattee  
 Vice-President, Mary Peet  
 Secretary, Louise Wrockloff  
 Treasurer, Mary King

Executive Committee—Composed two faculty members, Mrs. Florence D. Russell, and Prof. R. R. Colburn, and Jewell Hickox, Earl Thomas, Donald DeWitt and Truman Douglass.

## POMONA-CHINESE STUDENTS

MEH YUIN DZIAO, President.  
 FRANKLIN G. H. LEE, Vice-President.  
 FRANKLIN L. HO, English Secretary.  
 C. W. CHIN, Treasurer and Business Manager.  
 GEOFFREY C. CHEN, Representative of the Club.

